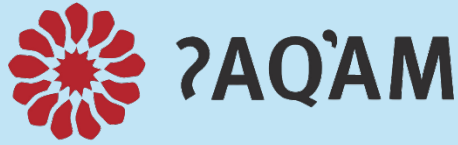


COMMUNITY NOTICE



WHAT IS HAPPENING?

From February 11 - Around March 15, there will be regular logging truck traffic along Upper Mission Rd from Monday - Friday, 5 AM - 3 PM.

WHAT TO EXPECT?

Logging Trucks hauling wood going both directions on Upper Mission Rd, existing from the Gravel Pit Td.

Logging trucks have limited visibility - do not pass them as they can not see you! When a logging truck is coming towards you, please find an area where you can pull over safely. (Best on a straight stretch of road)

WHAT CAN YOU DO?

If ʔaqamnik will be driving on Upper Mission Road frequently, the Lands Department highly recommends having a radio within the vehicle.

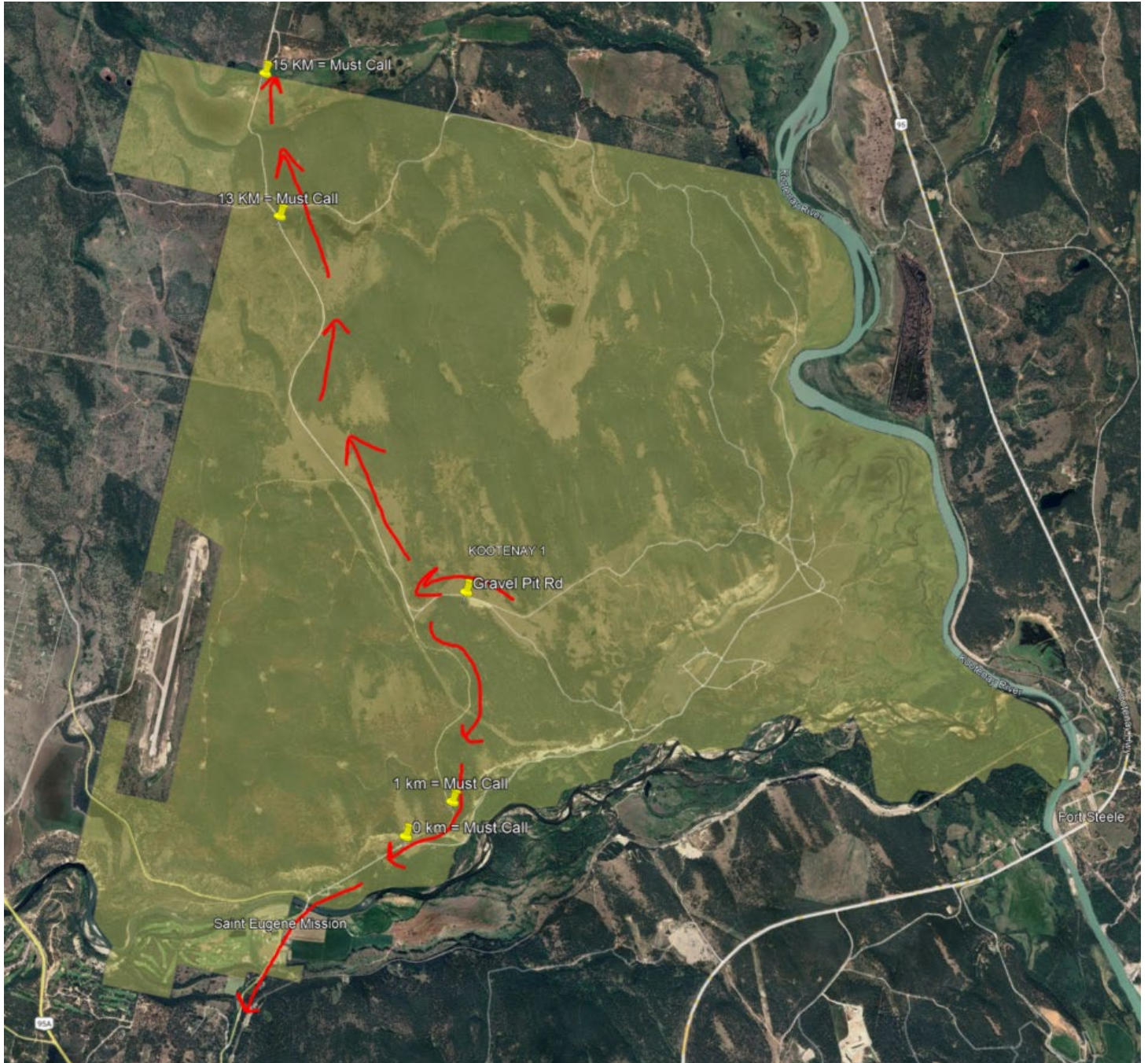
Programmed handheld radios will be available at the reception desk at 7470 Mission Rd. to rent out starting Monday February 10, 2025.

Logging truck traffic will be on Radio Channel RR-1.

QUESTIONS / CONCERNS

Further information is available at reception regarding radio calling procedures, safe driving practices and how to use your radio responsibly.

For any further questions / concerns regarding timber hauling safe road procedures please contact Will Kaufman at 236-703-9542 or wkaufman@aqam.net



Red Arrows = Haul Direction from Gravel Pit Rd.

Yellow Pins = Must Call Markers

Yellow Shaded Area = Kootenay IR #1